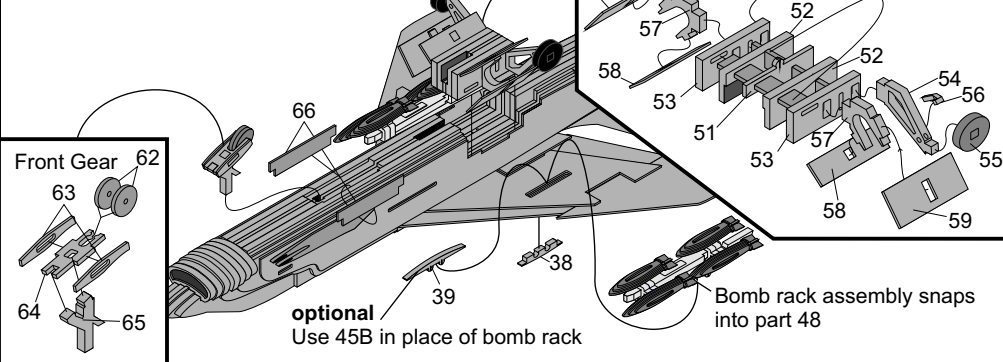
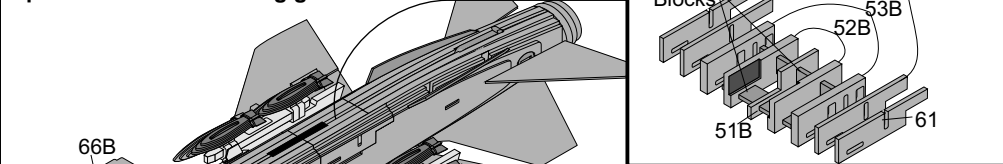


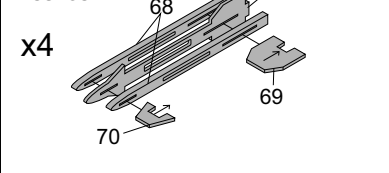
**Step 9**  
Landing gear  
Bomb racks attachment



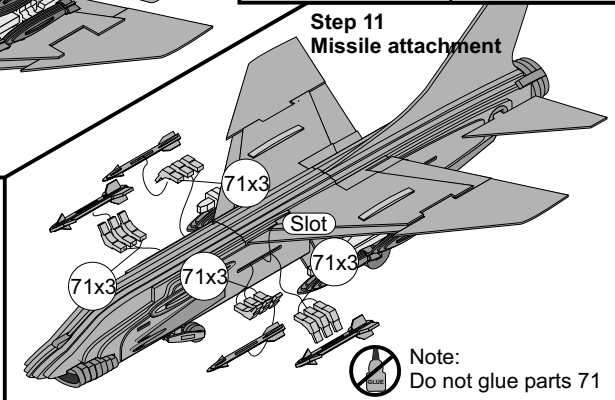
**Step 9B**  
Optional retracted landing gear



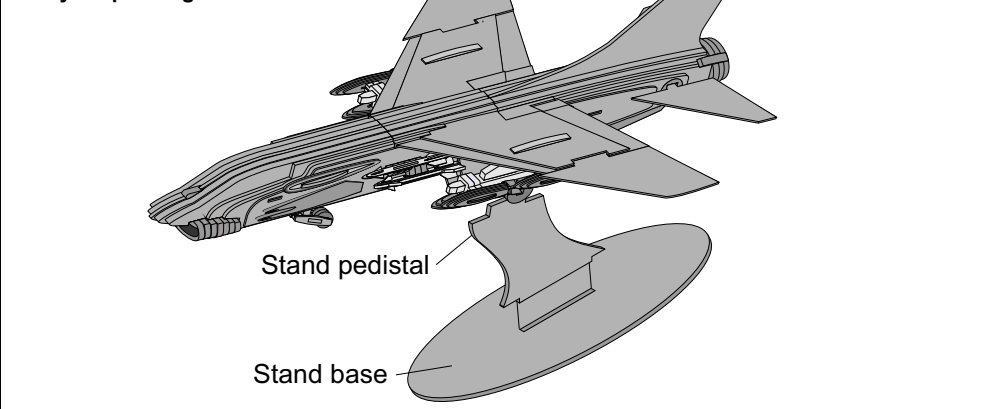
**Step 10**  
Missiles



**Step 11**  
Missile attachment



**Step 12**  
Ready for painting



# Chance Vought F8D Crusader



The F-8 Crusader was designed by Chance Vought as a carrier based air superiority fighter for the US Navy. It would be the last American fighter aircraft to rely on guns as its primary weapon, thus earning the title; "The Last of the Gunfighters". Power was provided by a single Pratt & Whitney J57 engine producing around 18000 lbs. of thrust in full afterburner. This allowed the aircraft to obtain speeds of Mach 1.8. It was first flown in March of 1955 becoming operational by mid 1957. A total of 1,219 aircraft were built in several configurations. Operators outside of the US Navy include the French and Philippine Navy's. Both retiring their aircraft by December 1999, ending 44 years of Naval service.

The F-8 was a challenging aircraft to land on the deck of an aircraft carrier. The high speeds needed during landing were somewhat tempered by the Vought engineers by giving the Crusader a unique feature; a variable angle of incidence wing.

Crusaders were involved in many high profiled conflicts. In 1962 during the Cuban Missile Crisis, unarmed RF8's (photo reconnaissance versions) were used to document the build up of Soviet ballistic missiles in Cuba.

The Vietnam War saw F-8's used extensively throughout the conflict for many different missions. As a fighter it achieved a 19:1 kill ratio ironically achieving most kills with the AIM-9 sidewinder missile and 4 kills with its guns. The F-8 also made for a suitable platform for general purpose bombing missions and Zuni rocket attacks.

The markings included in this kit are from Fighter Squadron VF-111 "Sundowners" during their 1965 cruise aboard the USS Midway (CV-41). On August 13, 1965 Lt. Gene Gollahon was flying a mission over North Vietnam when he was shot down, after his aircraft was hit by enemy ground fire. His wingman on that mission, LTJG Thomas Howard, chose Lt. Gollohan's markings to honor his memory.

**F8D Crusader Specifications**

Length	55 ft 11.6 in 45' 11"
Wingspan	35 ft 8 in
Power	1 Pratt & Whitney J57-P-20A afterburning turbojet engine producing 11,400 lb of thrust, 18,000 lb in afterburner
Performance	Mach 1.8
Armament	Various

**Air to Air mission**

**Guns:** 4x 20mm Colt Mk 12 cannons  
**Missiles:** 4 AIM-9 Sidewinder missiles

**Attack mission**

2 AGM-12 Bullpup air-to-surface missiles  
Zuni rockets  
Assortment of GP bombs ranging from 250lb to 2000lb

**Building tips:**

All parts will be a tight fit. If you find a part is too tight give it a bit of a sanding with 220 grit sandpaper.

**DO NOT FORCE PARTS.** A hobby knife is suggested to cut the pieces from the part tree but most parts will break free easily. We recommend removing the burnt edge left by the laser with 220 grit sandpaper. This makes it easier for painting also it makes for a better appearance, especially if you are going to leave the model in it's natural wood state. Although the model is designed to be assembled without glue, we do suggest glueing your model together. Noting indicated parts that are not to be glued. Any black substance that gets on your hands is non toxic and can be removed with soap and water

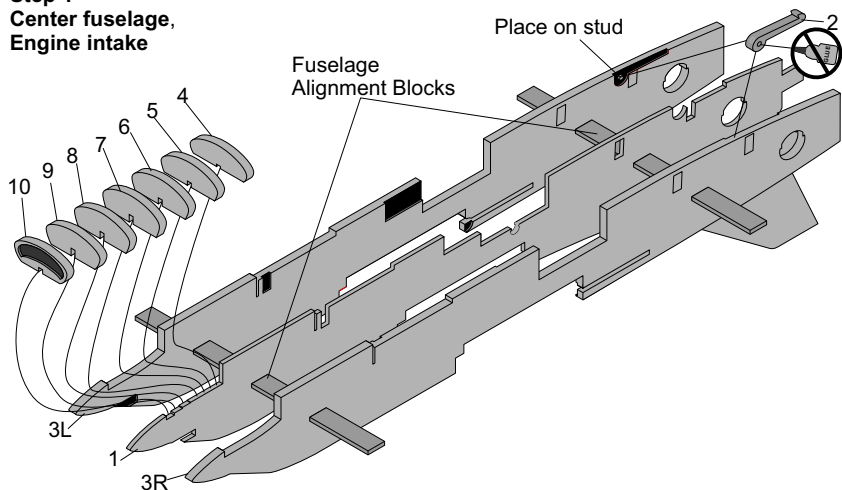
Indicates do not glue part or assembly

Indicates part is a friction fit in order to hold in place

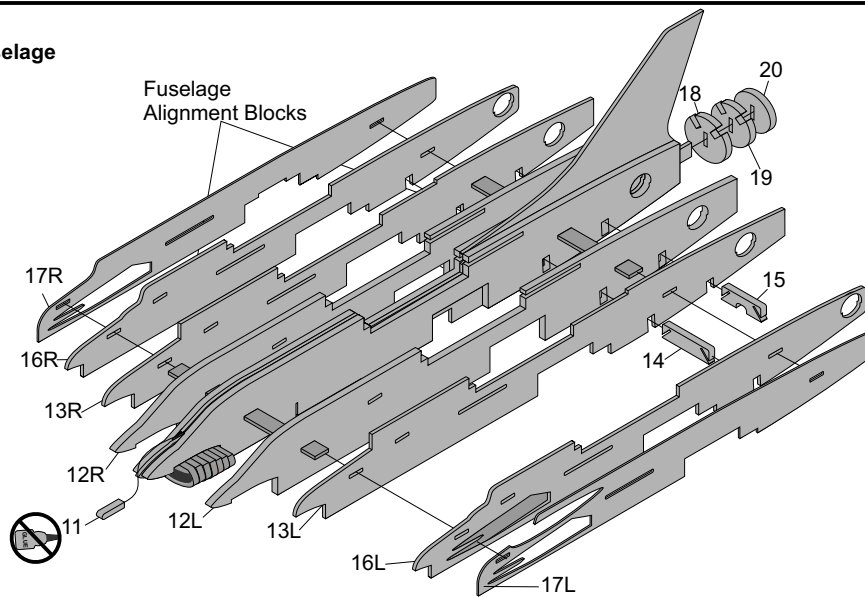
**Recommended Tools:**

Hobby Knife, Scissors, White Glue, 220 grit sandpaper

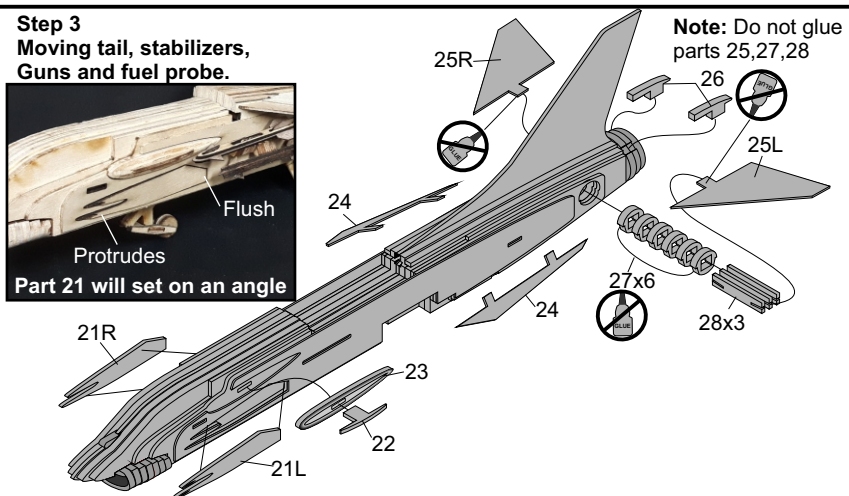
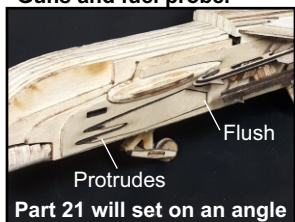
**Step 1**  
Center fuselage,  
Engine intake



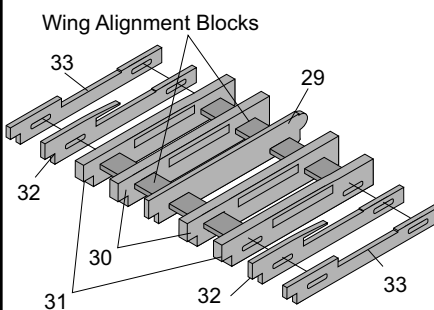
**Step 2**  
Outer fuselage  
Exhaust



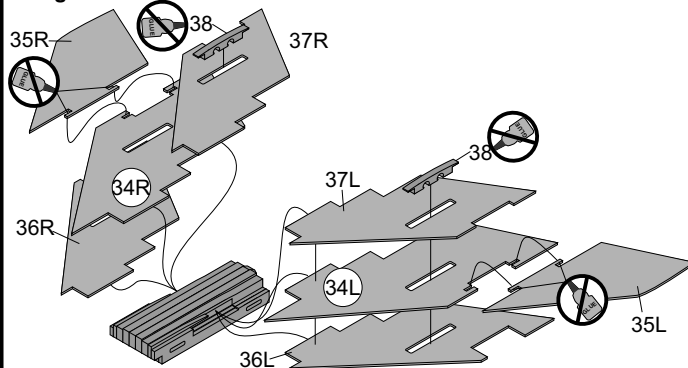
**Step 3**  
Moving tail, stabilizers,  
Guns and fuel probe.



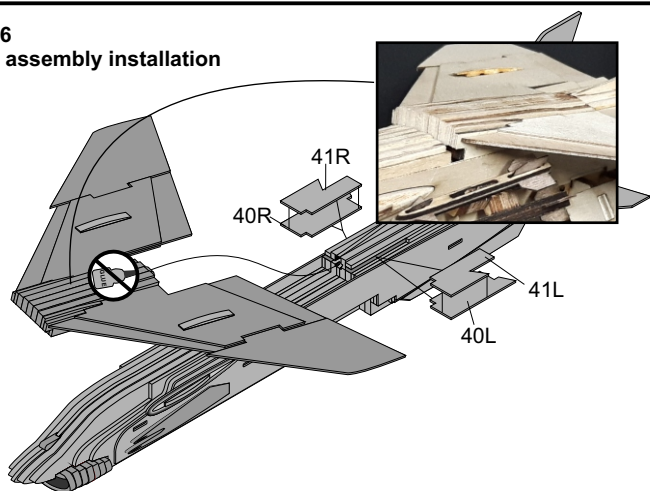
**Step 4**  
Center wing assembly



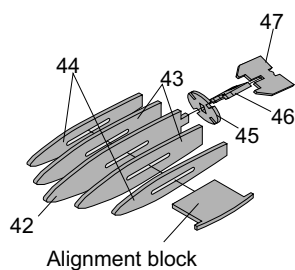
**Step 5**  
Wing assembly



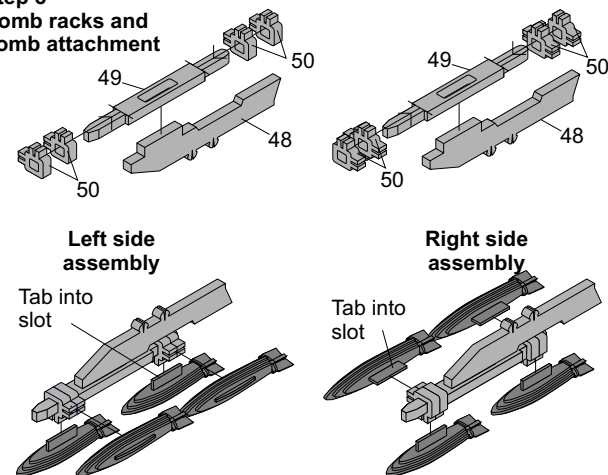
**Step 6**  
Wing assembly installation



**Step 7**  
Bombs



**Step 8**  
Bomb racks and  
bomb attachment



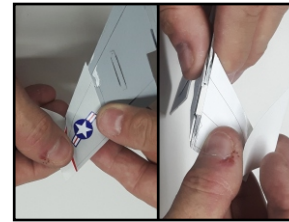


# Applying decals

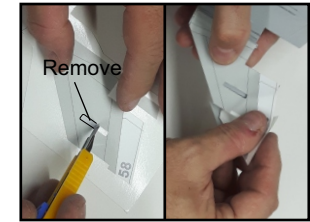
## Tools needed to apply decals

Scissors, Utility knife

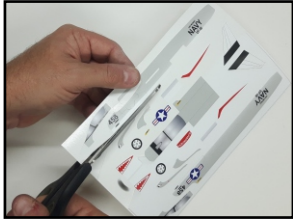
Make sure your hands are clean before applying decals. Avoid contact with the adhesive as this can cause the decal to lose some of its adhesion. Decals will adhere better to a smooth clean surface so we do recommend painting your model for best results.



Place decals 15L/R and 16L/R into position on wingtips



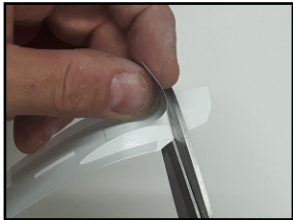
Remove piece of vinyl to allow for part 38. Place decals 17L/R into position making sure that your decal is properly aligned on the part.



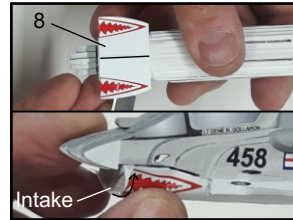
Cut out each decal as close to the edge as possible. Only cut out decals as needed.



For small decals you may use a utility knife to remove them from the backing and place in position.



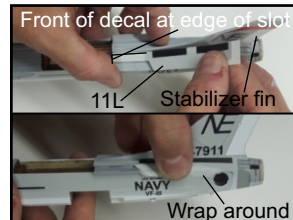
For the large decals, remove about a 1/4" of the backing and cut off with scissors.



Place decal 8 on bottom center of intake. Gently wrap decal around intake



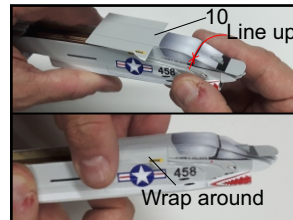
Place the exposed section on the surface making sure that your decal is properly aligned on the part.



Line up front of decal 11 to the rear of slot. Apply parallel to fin. Wrap around fuselage.



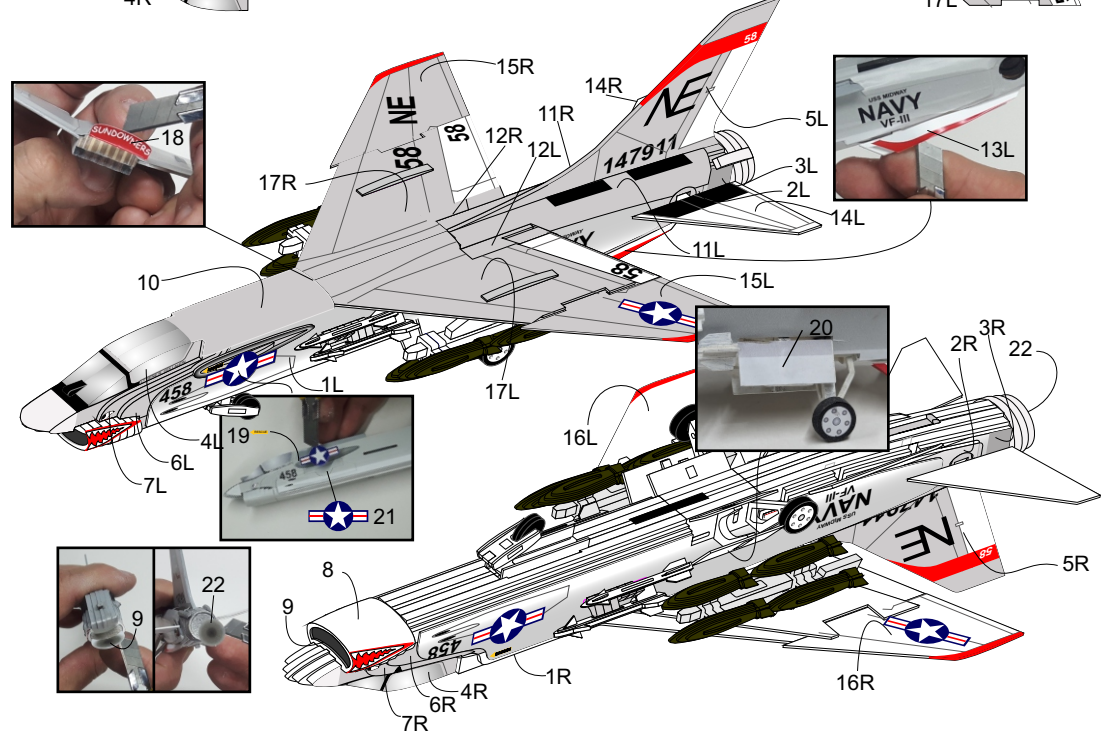
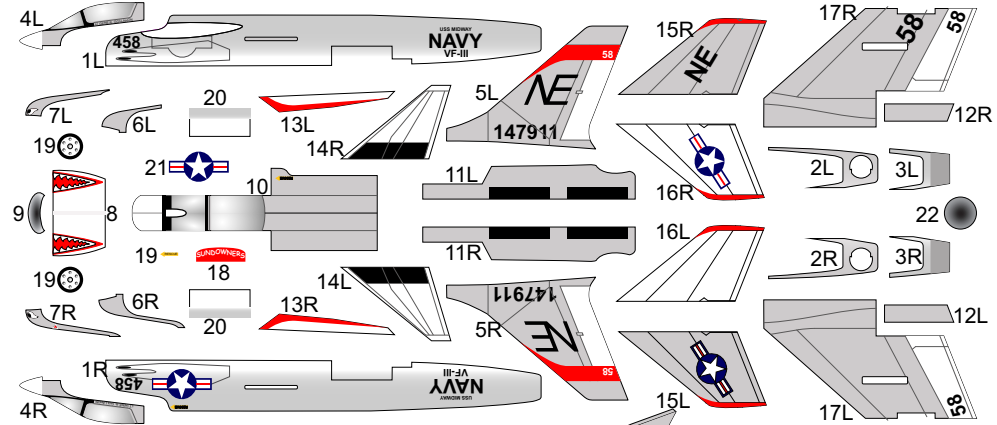
Slowly remove the backing by cutting in stages to make sure the decal is staying aligned on the surface.



Place decal 10 into position on the top center of the fuselage. Wrap back part of decal around fuselage.

Decals should be placed into position in numerical order. You will need to remove the wing assembly, rear horizontal stabilizers and missile racks to apply some of the decals.

**Take your time.**



# Colour Scheme of F8D Crusader 147911

## Suggested colours by Tamiya Model Paints

### 1 Light Gray XF19

All upper surfaces  
Missile racks

### 2 White X2

All under surfaces  
Landing gear  
Horizontal stabilizers  
Missiles  
Bomb rack pylon/rack  
Landing gear doors

### 3 Red X7

Leading edge of folding wing tip  
Leading edge of vertical stabilizer

### 4 Black XF1

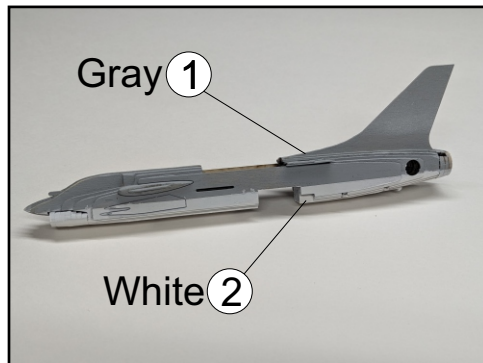
Tires  
Part 11

### 5 Aluminum XF16

Exhaust

### 6 Olive Drab XF62

Bombs



Paint upper section of fuselage grey and the lower section white. Use the etched line as a guide.

